



POPE AND YOUNG CLUB®

OFFICIAL SCORING SYSTEM FOR BOWHUNTING
NORTH AMERICAN BIG GAME TROPHIES

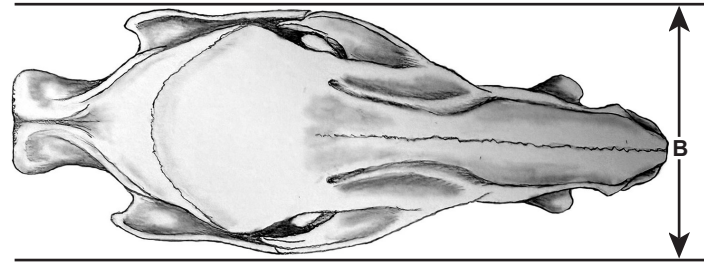
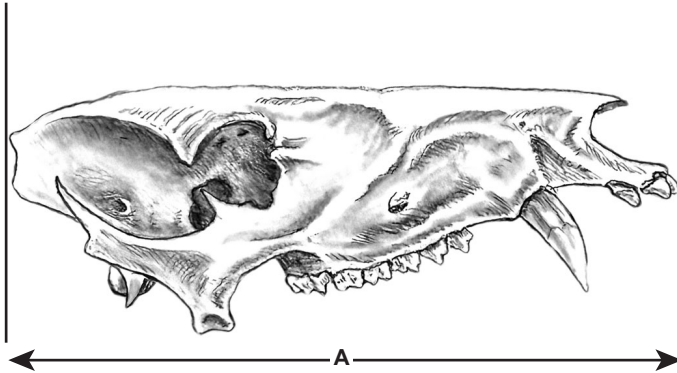
JAVELINA

(CHECK ONE): MINIMUM SCORES

☐ Male

13 14/16

☐ Female



SEE OTHER SIDE FOR SCORING INSTRUCTIONS

MEASUREMENTS

A. Greatest Length Without Lower Jaw

(Measured in Sixteenths)

B. Greatest Width

(Measured in Sixteenths)

FINAL SCORE

Exact Locality Where Killed:*

County:

State/Prov:

Hunter (Legal Name):

Date Killed:

Address:

Telephone #:

City

State:

Zip:

Hunter's Email:

Outfitter:

Remarks (Mention Any Abnormalities or Unique Qualities):

Pope and Young Club® Official Measurer Email:

Pope and Young Club® Official Measurer I.D. Number

*Geographic location (lake, mountain, river, etc.) required for trophies taken in Canada and Alaska.

No part of this scoring system may be altered in any way. No part of this score chart may be altered or copied without express written permission from the Pope and Young Club. A score chart is not authenticated until signed and dated by a certified Pope and Young Club Official Measurer. No scores are official Pope and Young scores until verified and the trophy is accepted by the Pope and Young Club. All trophy entries into the Pope and Young Club's Awards Programs are subject to verification.

I, _____, certify that I have measured this trophy on _____
PRINT NAME MM/DD/YYYY

at _____
STREET ADDRESS CITY STATE/PROVINCE ZIP CODE

and that these measurements and data are, to the best of my knowledge and belief, made in accordance with the instructions given.

Signature: _____
P&Y OFFICIAL MEASURER

ADDRESS

CITY STATE/PROVINCE ZIP

Records@Pope-young.org ■ Mail To: Pope & Young Club ■ 2028 E. Ben White Blvd. #240-9931, Austin, TX 78741 ■ Phone: 507-867-4144

BRIEF INSTRUCTIONS FOR MEASURING JAVELINA

Measurements must be made with a flexible steel tape and recorded to the nearest one-sixteenth of an inch. Calipers may **only** be used for the greatest width measurement. A calibrated skull box, or Boss Square, may be used for the greatest length measurement. To simplify addition, please enter fractional figures in sixteenths and in proper fractions. Refer to the **P&Y Measurer's Manual** for a detailed description of measuring procedures.

A. Greatest Length is measured between perpendiculars to the long axis of the skull **WITHOUT** the lower jaw, and **EXCLUDING** malformations. (Normal teeth are included)

B. Greatest Width is measured between perpendiculars at right angles to the long axis.

All adhering flesh, membrane, and cartilage MUST be completely removed before the drying period begins and official measurements are taken.

ENTRY REQUIREMENTS

1. **Original scoring form** completed by an Official Measurer of the Pope & Young Club or the Boone & Crockett Club.
2. **Completed Fair Chase Affidavit.**
3. **Three photos of antlers, horns, or skull** (a view from the front side, a view from the left side and a view from the right side). A field photo is also requested, if possible. The front view is best taken from above at a 45-degree angle.
4. **\$40.00 recording fee** (made payable to the Pope & Young Club)

Drying Period: To be eligible for entry in the Pope & Young Records, a trophy must first be clean of all flesh, and have been stored under normal room temperature and humidity for at least 60 days after flesh was removed. No trophy will be considered which has been altered in any way from its natural state.